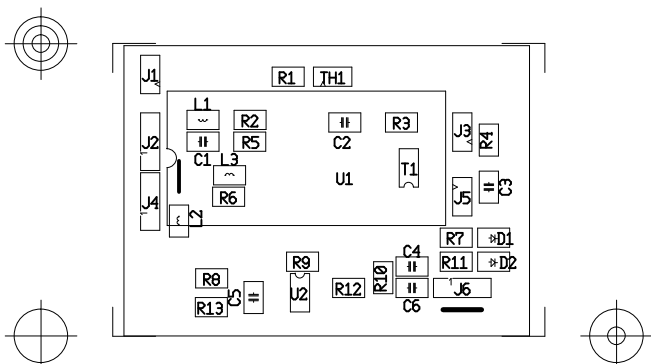


CT_Hott, Bottom (Apr. 04, 2015) (11:36) (PCB) SCALE: 100% ROTATED
Drill Ref Pnt: 0.568, 0.000 (inch)



CT_Hott, Top (Apr. 04, 2015) (11:36) (PCB) SCALE: 100% ROTATED
 Drill Ref Pnt: 0.568, 0.000 (inch)