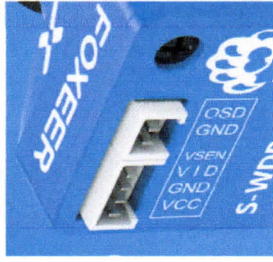


AKK Fx2

FOXER

PREDATOR V3

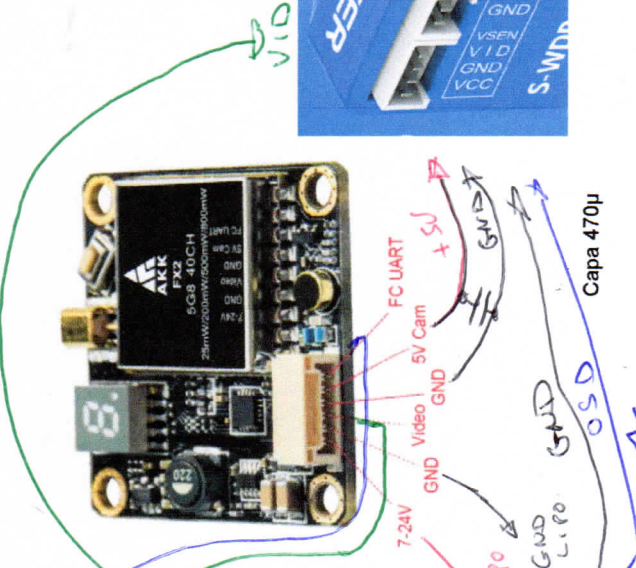


SBUS RX = UART2

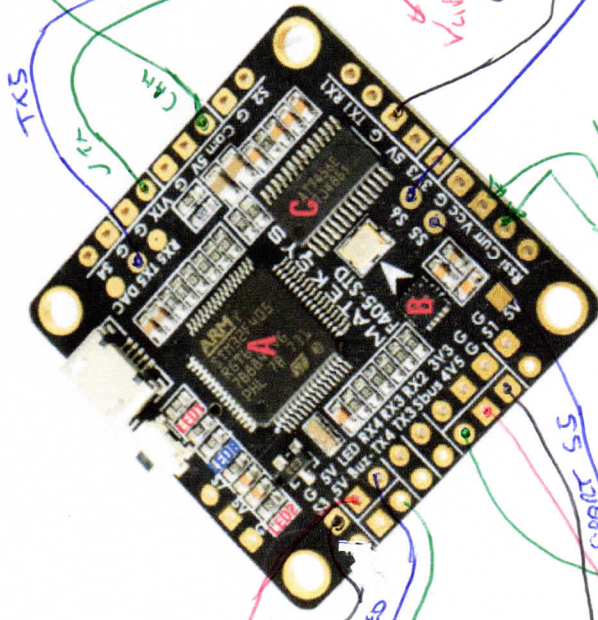
S. PORT. RX = S5 - (A15 Tx)

CAM CONTROLÉ

S6 - (A8)



Capa 470µ

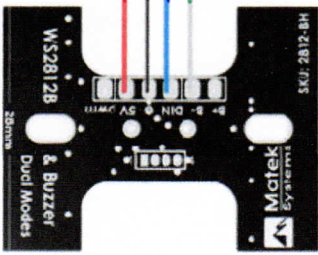
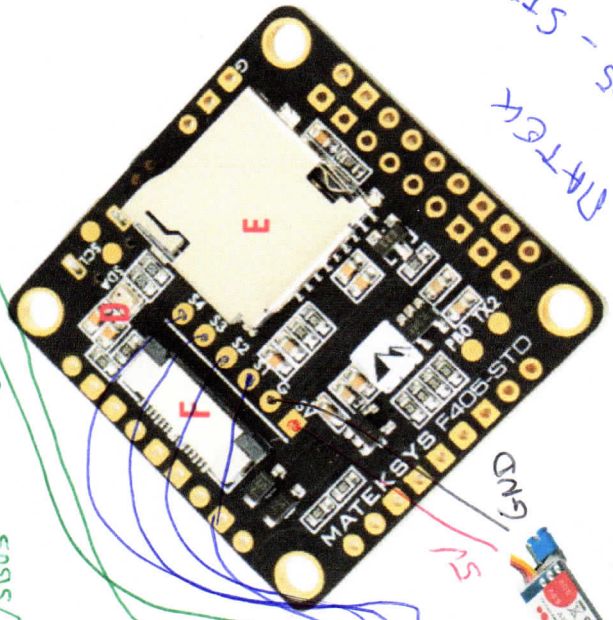


VBAT

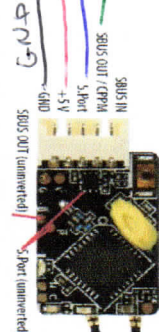
CURV

SBUS

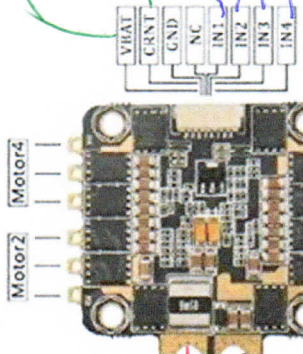
FA05-STD  
MATEK



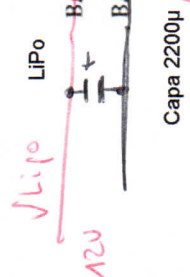
LED + BUZZER



R. XSR



RACER STAR REV35A



Capa 2200µ



BEC